

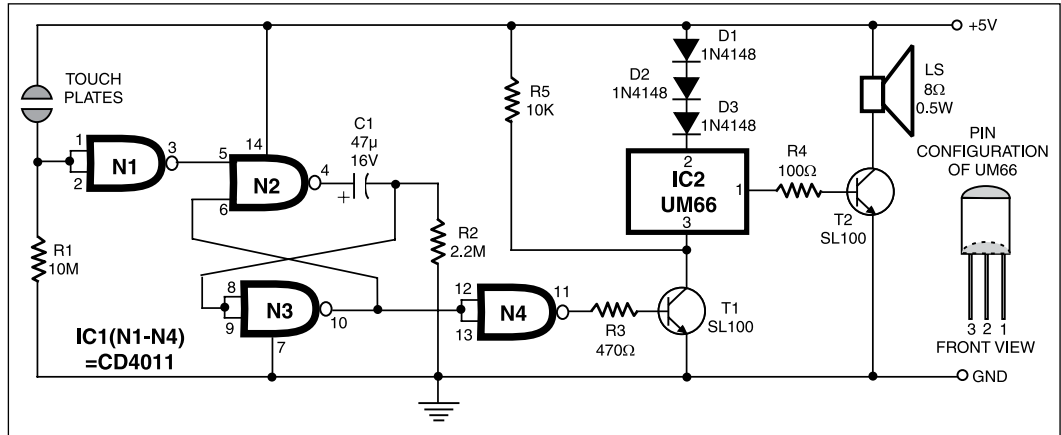
TOUCH-SENSITIVE MUSICAL BELL WITH TIMER

This circuit is built around CMOS IC CD4011 and popular melody generator IC UM66. When touch plates are bridged by hand for a moment, the circuit starts to generate music. After a few seconds the music automatically stops.

Maximum supply voltage for this circuit is +5 volts. The IC UM66 can not operate beyond 3.3V voltage. IC 7805

regulator based power supply can be used to power this circuit.

Time delay can be changed by chang-



ing values of capacitor C1 and resistor R2. Three silicon diodes connected in series between pin 2 of UM66 IC and positive

5-volt rail keep voltage applied to pin2 of UM66 below 3.2 volts because of the drop of approximately 1.8 volts across them.